



同濟大學
TONGJI UNIVERSITY



Master Programme in Environmental Management and Sustainable Development

CALL FOR APPLICATION

The master programme sponsored by MOFCOM is designed to foster high-end business officials and managerial personnel for the recipient countries, offering a two-year master programs for the purpose of educating high-end and inter-disciplinary talent working in the applied fields of government, trade, foreign affairs, agriculture, technology, education, culture and health, building intellectual capacity and facilitating the economic and social development of the recipient countries.

CAREER PROSPECT

IESD alumni are currently active in international organizations (such as the World Bank, UNDP, ESCAP, etc.), national government agencies (such as the Chinese Ministry of Ecology Environment, the Turkish Environment and Urban Planning Ministry, the Ministry of Labor and Social Security of Zambia, Egypt Ministry of Agriculture, Ministry of Environment, Serbian Ministry of Agriculture and Environment, Ministry of Natural Resources of Ukraine, Ministry of Environment of Romania, Ministry of Economy and Trade of Indonesia, Ministry of Agriculture of Zimbabwe, Ministry of Energy of Liberia, Ministry of Environment of Ethiopia, etc.), NGOs (such as WWF), academic institutions (such as Chinese Academy of Sciences, University of Wisconsin, University of Missouri, etc.), corporate departments (such as PricewaterhouseCoopers, Bank of China, Michelin tires, etc.) and other industries .

ABOUT THE PROGRAMME

Duration: 2 Years

From Sept.2019 to July 2021

Language: English

Curriculum: Environmental Assessment Impact, Ecological Economy, Environmental Management and Policy, Water Resource Management, Environmental Informatics, Solid Waste Management, Climate Change, Literature and Scientific Writing, Chinese Language , Chinese History and Culture, etc.

MOFCOM SCHOLARSHIP

- Tuition of 12 000 USD waiver;
- On-campus accommodation;
- Stipend: 3000RMB per month;
- Medical insurance in China
- Two round-trips international airfare

How to apply: Email to unep_tongji@tongji.edu.cn by 12 July 2019



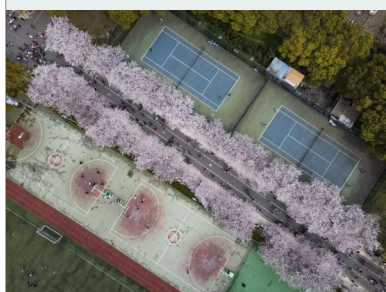


CURRICULUM

- Literature and Scientific Writing
- Environmental Assessment Impact
- Ecological Economy
- Environmental Ethics
- Environmental Management and Policy
- Water Resource Management
- Solid Waste Management
- Atmospheric Science and Climate Change
- Environmental Science
- Environmental Informatics
- Water Supply
- Wastewater Treatment
- Environmental Molecular Microbiology
- Chinese Language
- Chinese History and Culture
- Chinese Social-Economic Development
- Chinese Politic Relationship
- ...

"tóng zhōu gòng jì" is a chinese idiom, which means we are in the same boat and cross the river together, in another word, we unite and help each other, work together to overcome difficulties.

CAMPUS LIFE



ABOUT TONGJI UNIVERSITY

Tongji University is one of the leading universities in China under direct administration of Ministry of Education, listed on "Project 985" and "Project 211". With a history of over a century, Tongji has valued the balanced development of four functions, i.e. education, research, outreach, and culture inheritance and innovation.

The history of Tongji can be traced back to 1907 when German Medical School was founded by Erich Paulun, a German doctor in Shanghai. After being renamed Tongji German Medical School in the following year, it was formally established as a university in 1923. It became National Tongji University in 1927, one of the seven earliest national universities of China. Around 1949, Tongji already boasted five colleges of natural sciences, engineering, medical science, liberal arts and law, and enjoyed a fine reputation as a comprehensive university both home and abroad. Following a nationwide campaign of restructuring universities in 1952, Tongji became an engineering-intensive university with top-notch strength in civil engineering and architecture, which is second to none in terms of scale and number of disciplines. Since 1978, "two transforms" were launched, namely, the transforming to an international university by restoring links to Germany, and the transforming from a university focusing mainly on civil engineering to multi-disciplinary engineering university. In 1995, Tongji declared to be jointly built by the Ministry of Education and the Shanghai Municipal Government. By 2007 when it was celebrating its centennial, Tongji had become a comprehensive, international, research-oriented university with distinct features and global influence. In 2013, the university proposed its vision of "a sustainability-oriented, world-class university".



Students life at campus

MY PERCEPTION ABOUT CHINA

“China is very large, but the recent achievements in field of Chinese transportation sector, like opening up highways and longest bridges, modernisation of transportation means, fast trains between distant cities, subways insides cities, electrical buses, using bikes...etc., all made moving from one place to another more easy and enjoyable.

They think big « self-reliance», I mean reliance on their own powers and resources rather than those of others, If they want to build a new airport, to manufacture their own planes, maglevs, rockets, aircraft carriers, super computers, nuclear plants, they just do it. No matter how much they're rudimentary at the beginning, because they will finish by getting very modernized and advanced at the end, the Chinese are taught in this way, i believe it is one of the secret principles inherited since the liberation revolution that helped to ensure the independence of China and its development.”

—Chenni Hadj from Alegria

“After living in China for almost a year, there are aspects of the culture that never ceases to surprise me. I believe that China has grown at an incredible rate and today is a land of many opportunities. I experience what it feels to live in a world leading economy, where everything can be done online using only your mobile phone. I was always curious about the “secrets” of Chinese medicine, but what surprised me was how much people here are physically active. For example, it is very common to see Chinese elderly going to the streets and doing all kinds of exercise! It is also beautiful how Chinese have a strong sense of family, the grandparents always helping to take care of their grandchildren and the parents investing in their child's education. ”

—Bianca Fernandes Novo from Brazil

“One thing that is common in the cities is patriotism and willing to help the country through any measure they can. All Chinese are proud of the long living history, culture, and ancestors value and have tried best to preserve them. I am amazed to see the way China has maintained its monuments. Shanghai, the place I live in is a city that never sits, and is giving everyone an experience of past, present and future. The well-preserved nature and cultures are easily bending with this rocketing world. Bund lights to Yuyuan walk, dancing grannies to techno clubs, traditional cuisines to the variety available, starry ground from Shanghai tower not only mesmerizes me but everyone who visits here. ”

—Srijan Shrestha from Nepal

ABOUT SHANGHAI

Life in Shanghai is rich, safe and convenient. Shanghai is a metropolitan - a melting pot of eastern and western culture, traditional and modern China. You have a variety of options when it comes to exhibitions, concerts, shows and entertainments. Shanghai is one of the safest and convenient city in China. Public resources and facilities. are readily available and accessible.

Living in Shanghai can be either relatively cheap or very expensive. It all depends on how you arrange your finance.

You can use your passport to set up a bank account at a bank near campus. These accounts can receive wire transfers in US dollars and Chinese Yuan from both international and domestic sources. You should check with your current bank to see if they have any reciprocity arrangements with banks in China. Remember to register a local mobile phone number before you open a local bank account.

Shanghai is one of the most international cities in China. Most young people understand and speak a limited English. However, you may find it difficult to communicate with local taxi drivers, cashiers in stores, or middle-aged and senior people. Therefore, it is helpful if you can learn how to say the address for the residence hall and campus in Chinese, or other basic Mandarin before you come, such as asking for road, asking for help, etc. Keep a copy of the address card we prepared for you in your purse or wallet in case the driver cannot understand you.

While you study in Shanghai, take the advantage to speak as much Chinese as you can at all times and do not be afraid to speak because you think your accent is horrible. You will find that locals are very encouraging to new speakers and will always compliment you on your speaking.

UNEP-TONGJI IESD

UNEP-Tongji Institute of Environment for Sustainable Development (IESD) was jointly established by Tongji and UNEP since 2002.

The institute has enrolled 464 students from 83 countries into the degree program. The Environment discipline of Tongji University **ranks A+** among the 155 universities in China according to the recent evaluation by the Chinese Ministry of Education.

MOFCOM SCHOLARSHIP PROCESS

The Economic and Commercial Counsellor's Office in the Chinese Embassy (ECCO) in your country accepts the nomination from the local government and it would be very helpful if you could get some recommendation from the government. Then ECCO will organize interviews and issue recommendation letters for qualified applicants. Only with the recommendation letter issued by the ECCO, the university would start the recruitment process.

Online Application Process

1. Visit <http://www.csc.edu.cn/studyinchina> or www.campuschina.org and click "Application Online for International Students".
2. Fill in the correct Program Category and Agency Number. An Agency Number represents a specific application receiving agency and a correct choice of Program Category is necessary before filling in the Agency Number. Please make sure you fill it in correctly, otherwise you will not be able to continue your online application or your application will not be accepted.
3. Your 'Program Category' is: Type B and 'Tongji Agency Number' is: 10247. Once the correct 'Agency Number' is entered, the name of the agency will automatically emerge.

Prepare other supporting documents as required and send the full package of application documents (both hardcopies and scancopies) to the Economic and Commercial Counsellor's Office (ECCO) of the Chinese Embassy.

UNEP-Tongji IESD

Room 903, No. 1239, Siping Road,
Shanghai, China. P.R

Phone: 0086 21 6598 3498

Fax: 0086 21 65987790

E-mail: unep_tongji@tongji.edu.cn

